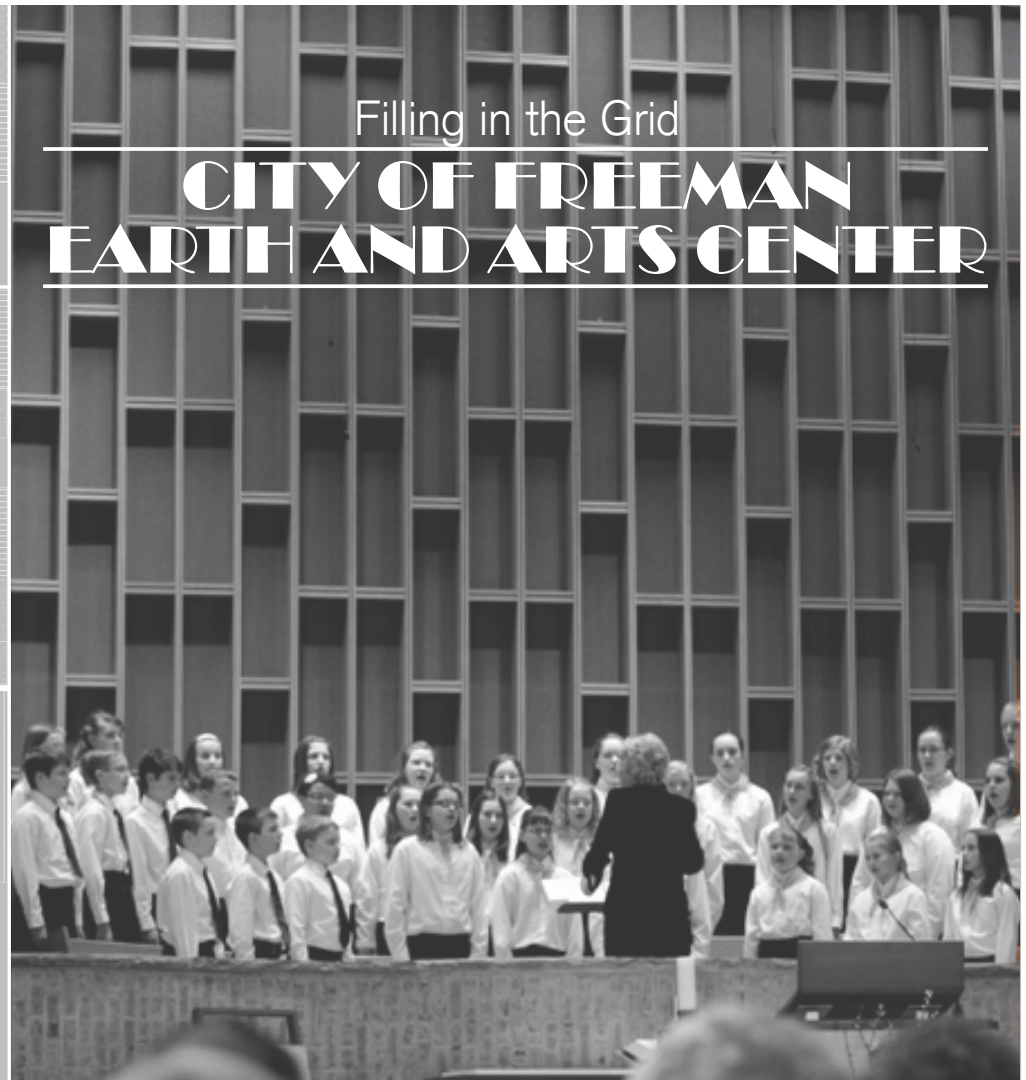
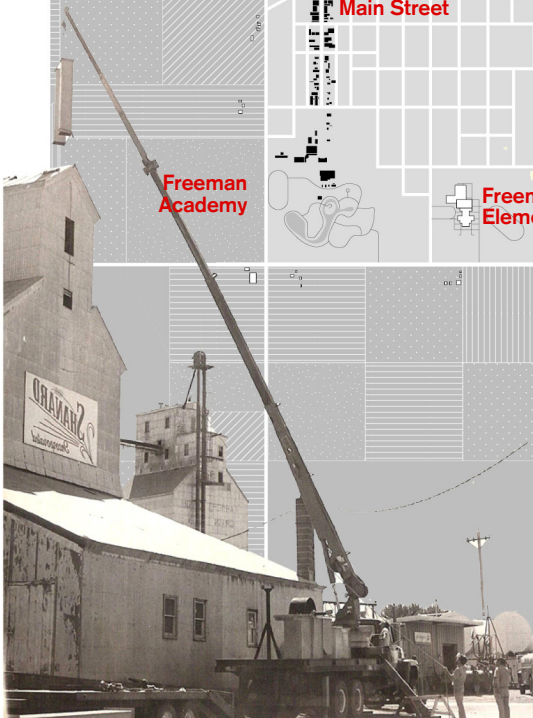
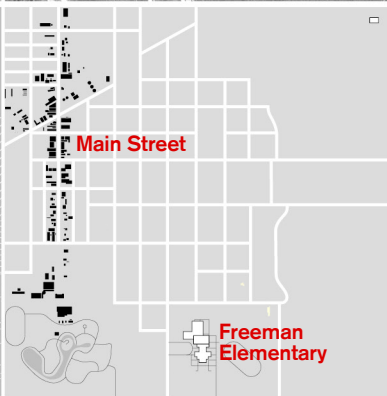


Filling in the Grid

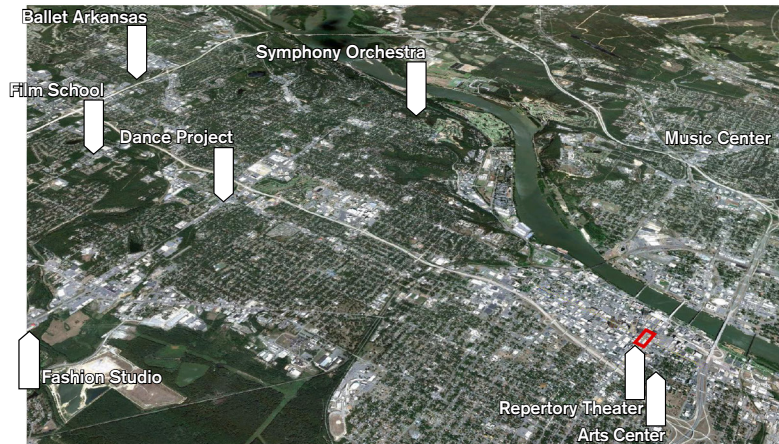
CITY OF FREEMAN EARTH AND ARTS CENTER



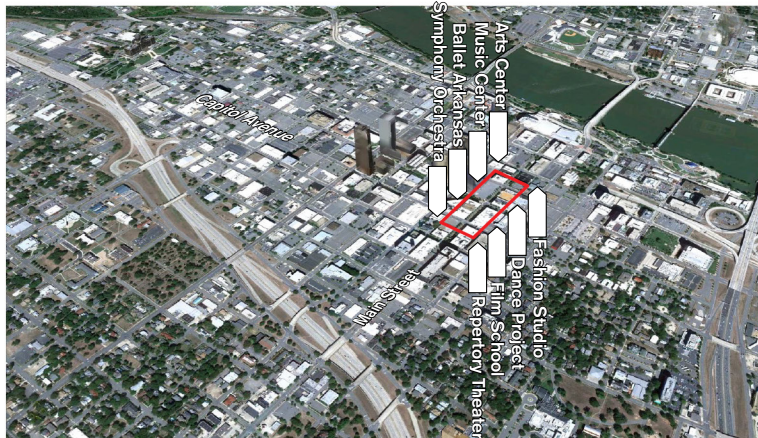
Work Samples: UACDC

THE CREATIVE CORRIDOR: A MAIN STREET REVITALIZATION

Little Rock, Arkansas 2012

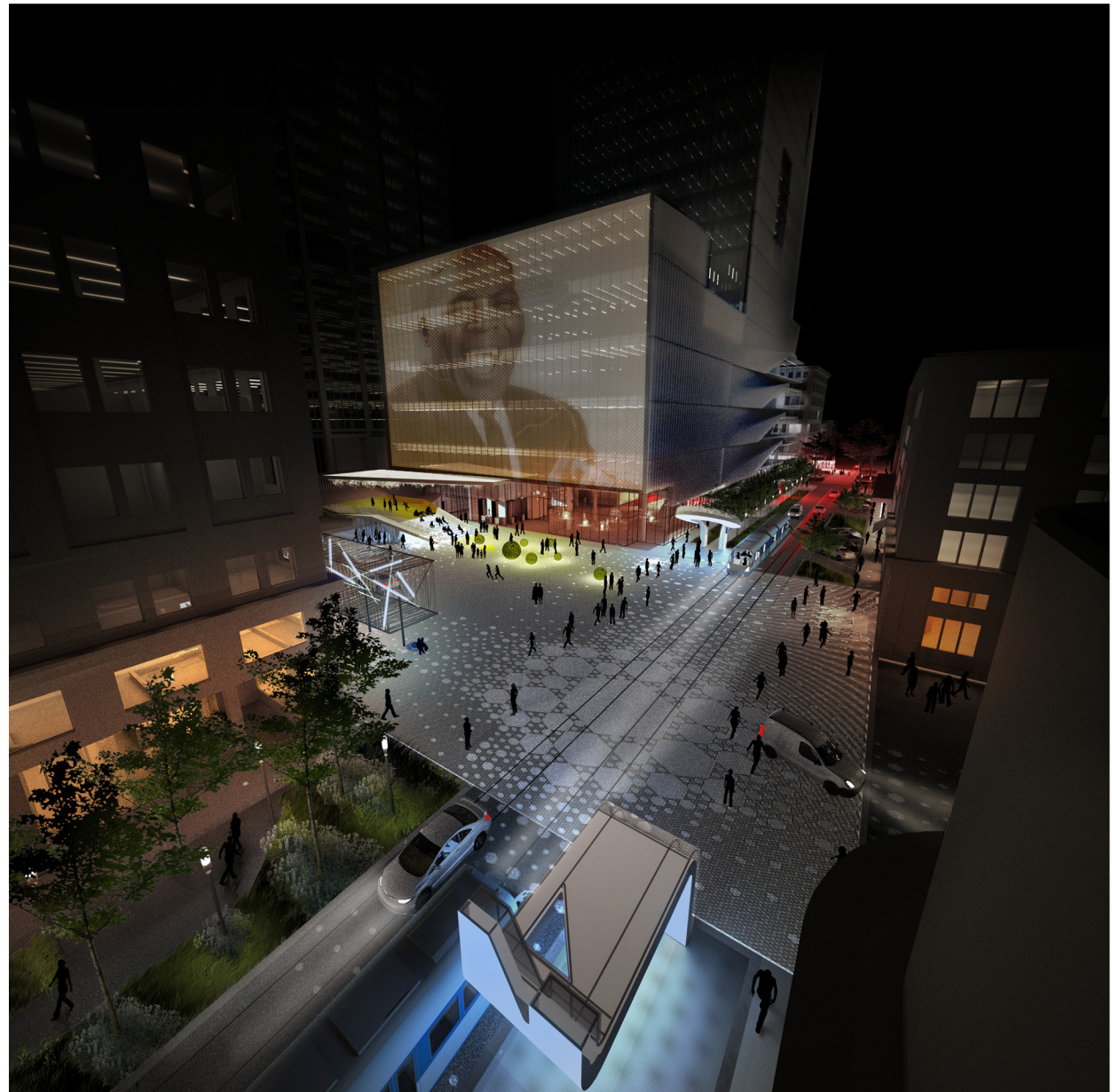


The Creative Corridor takes scattered cultural assets...



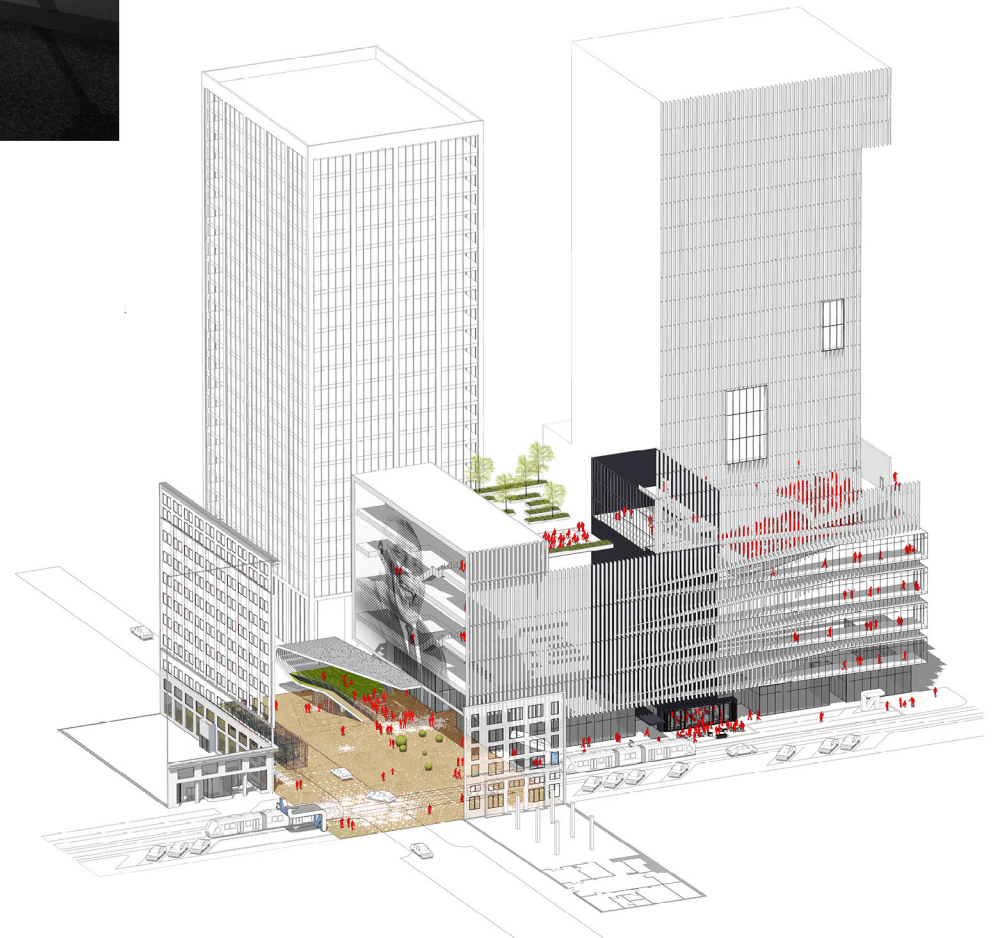
...and aggregates them into a district on four blocks.

The Creative Corridor retrofits a four-block segment of an endangered historic downtown Main Street through development catalyzed by the cultural arts rather than Main Street's traditional retail base.





The goal is to structure an identity for the Creative Corridor based on a mixed-use working and living environment anchored by the arts.



Work Samples: UACDC

TWO RIVERS PARK

Little Rock, Arkansas 2007

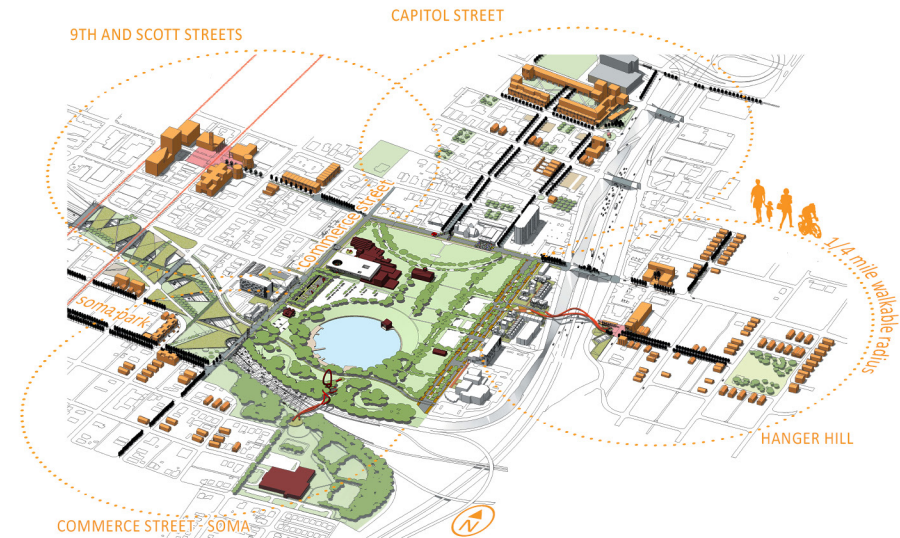
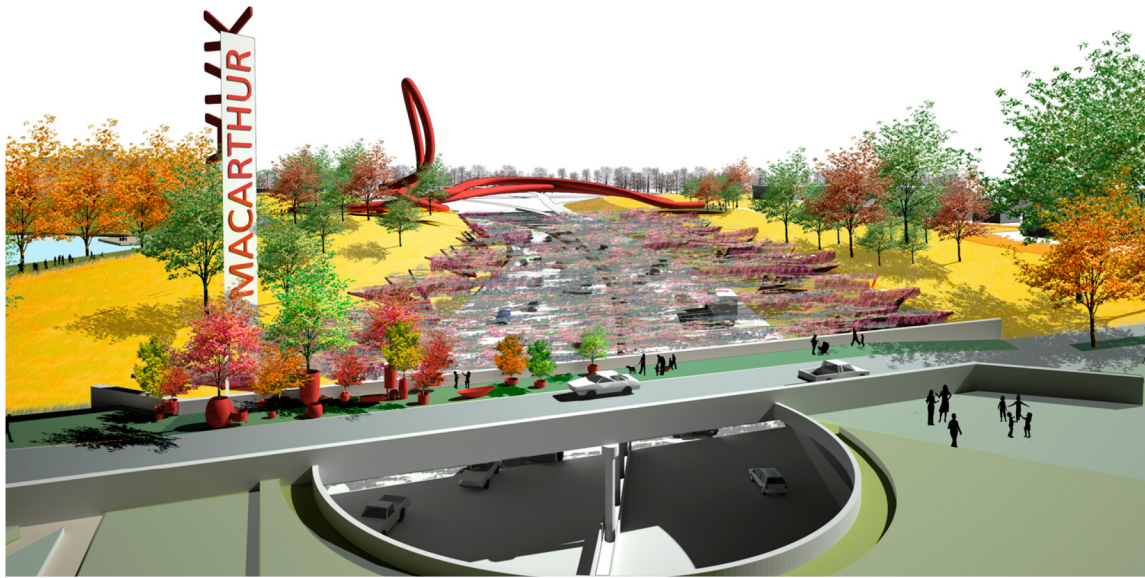


A 140-acre floodplain of this 1000-acre island park has been planted as a Garden of Trees that curates specimen trees in the tradition of a museological composition.

Work Samples: UACDC

MACARTHUR PARK DISTRICT MASTER PLAN

Little Rock, Arkansas 2009

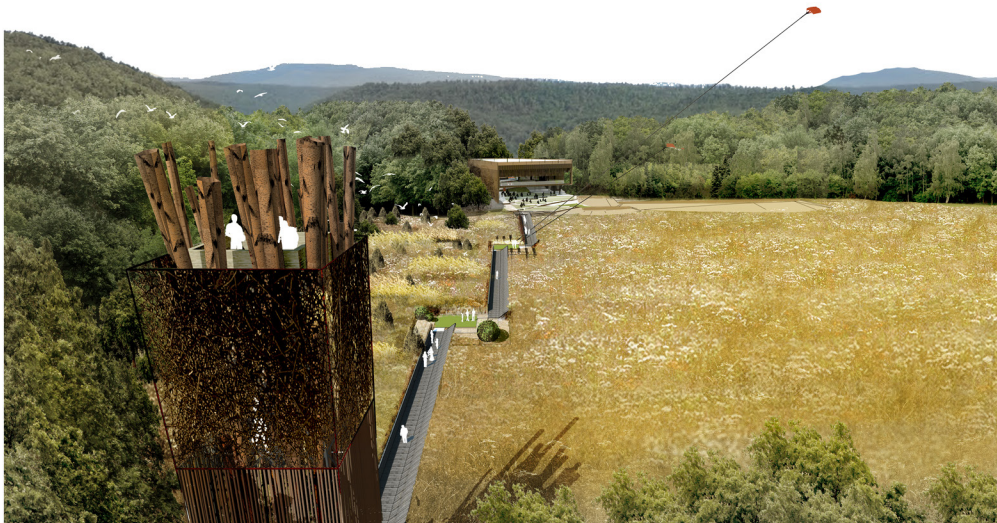


The MacArthur Park District Master Plan envisions the park as the anchor for a larger urban landscape network to connect legacy downtown neighborhoods with tree-lined streets, boulevards, neighborhood pocket parks, active recreation facilities, plazas, and other pedestrian amenities throughout the district.

Work Samples: UACDC

MAUMELLE ENVIRONMENTAL TRAILHEAD COMPLEX

Lake Maumelle, Arkansas 2013



The design approach of this visitors center and trailhead complex proposed for Central Arkansas Water integrates ecology, art, and architecture to amplify a connection to place.

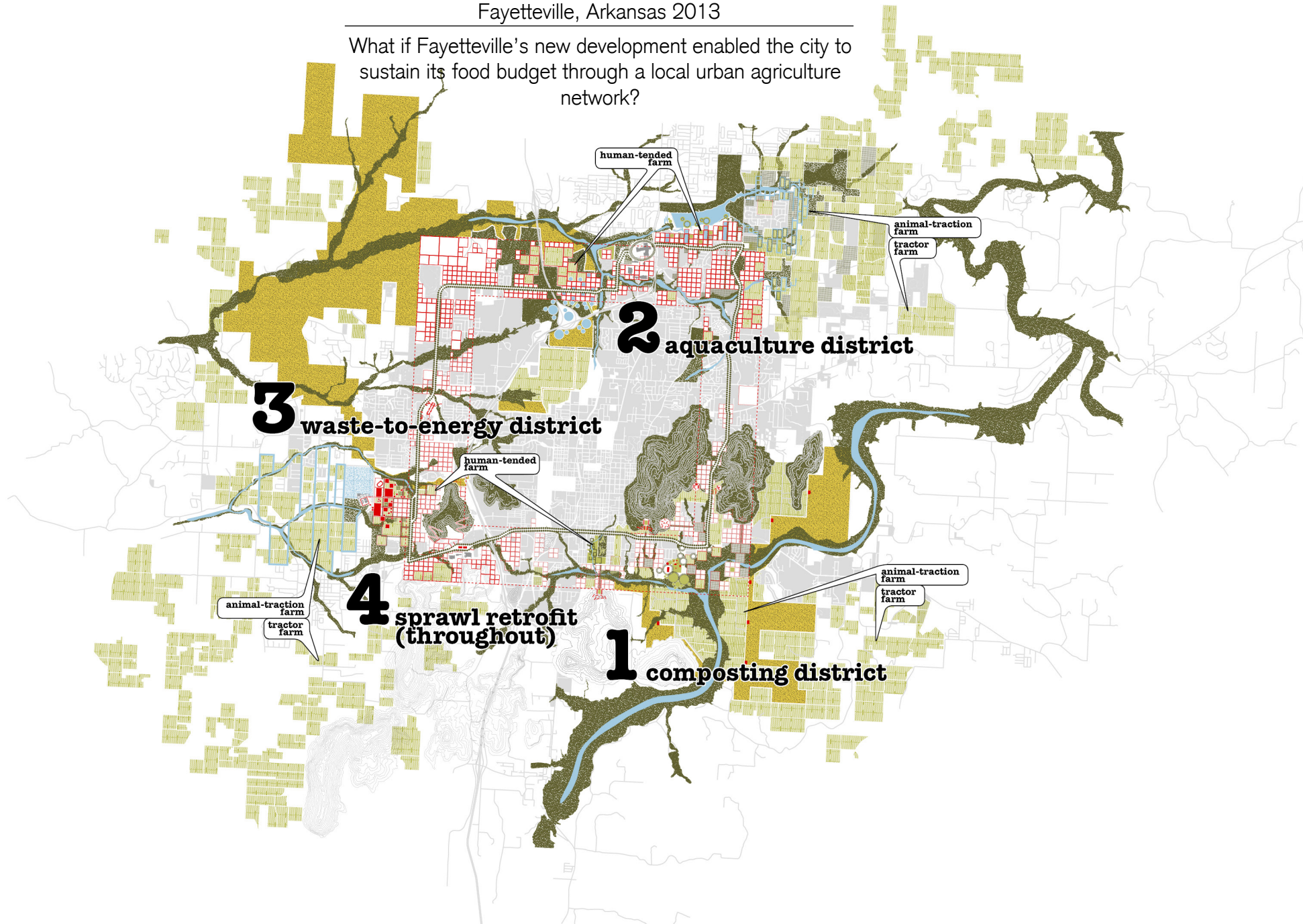


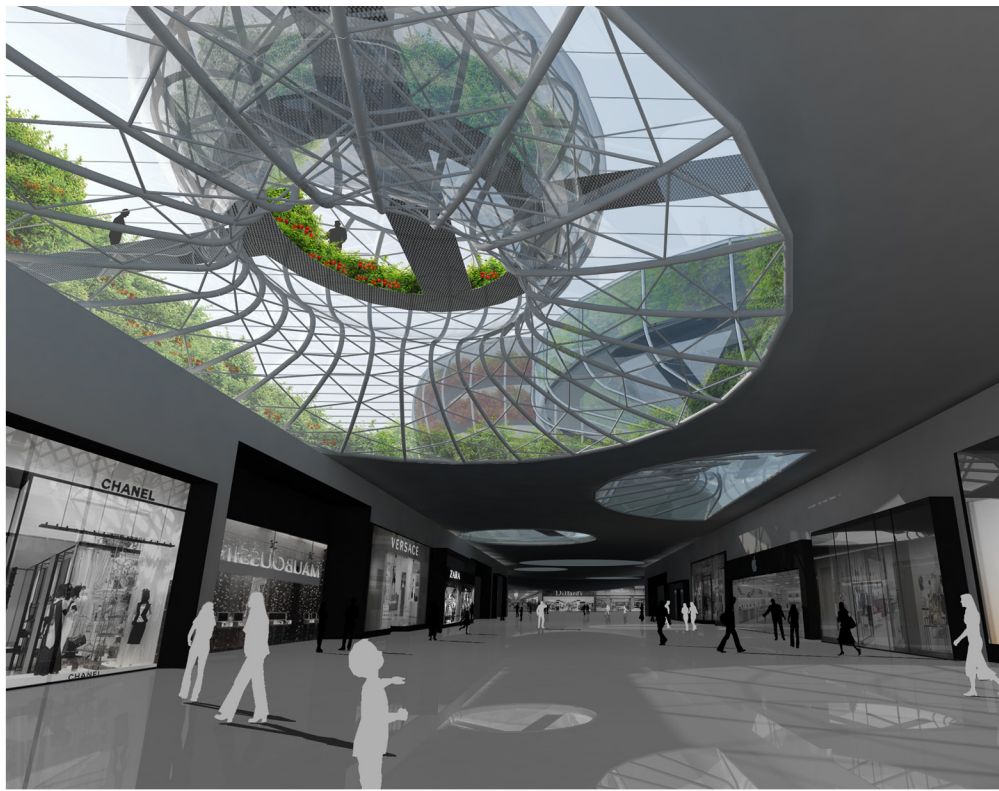
Work Samples: UACDC

FAYETTEVILLE 2030: FOOD CITY SCENARIO

Fayetteville, Arkansas 2013

What if Fayetteville's new development enabled the city to sustain its food budget through a local urban agriculture network?





The scenario plan envisions the foodshed as an ecological municipal utility, featuring green infrastructure, public growscapes, and urban spaces related to food processing, distribution, and consumption.



GROW Street: Moving Beyond the Backyard

GROW (Gardened Right-of-Ways)

Streets integrate front yards cultivated as food growing systems to create great community spaces.



Work Samples: UACDC

NORTHWEST ARKANSAS ARTS CENTER

Fayetteville, Arkansas 2007



A former food production facility is transformed into new studio and performance space with a green parking lot and art garden that doubles as a neighborhood park.

Work Samples: UACDC

TOWNSCAPING AN AUTOMOBILE-ORIENTED FABRIC

Farmington, Arkansas 2010

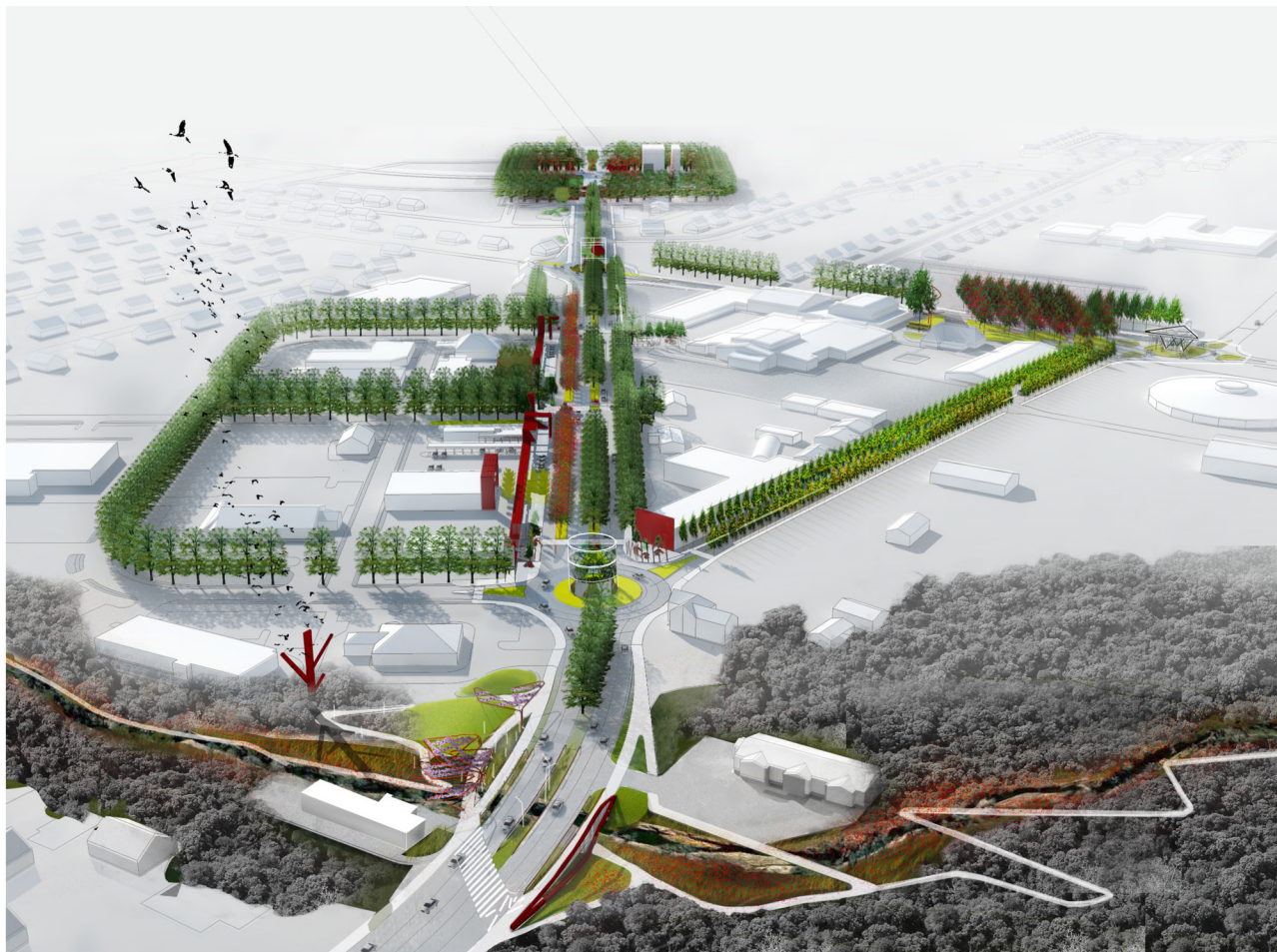
The Farmington townscape plan retrofits a suburban five-lane commercial arterial into a food-bearing multiway boulevard, revitalizing this once vibrant 5,000-person farming community.



How do you turn an arterial highway...



...into a food-bearing boulevard?



Townscaping employs a serial organization of nodes to create a walkable urban environment without reliance on capital-intensive architectural investments—an incremental urbanism.

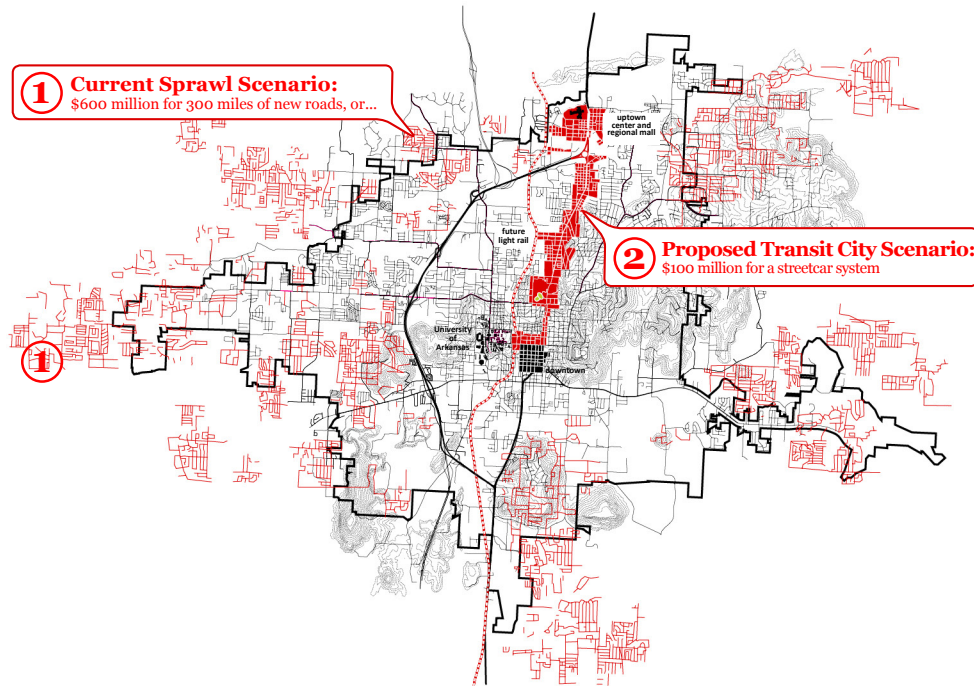


Work Samples: UACDC

FAYETTEVILLE 2030: TRANSIT CITY SCENARIO

Fayetteville, Arkansas 2011

Planned as a local six-mile fixed guideway system, the streetcar would connect Downtown and the University of Arkansas downtown with the uptown Northwest Arkansas Regional Mall along Fayetteville's primary commercial corridor.



Work Samples: UACDC

FAYETTEVILLE JUSTICE CENTER

Fayetteville, Arkansas 2005



A vocabulary of known architectural types related to porch, landmark tower, signature room, entry court, and atrium are combined to create a new civic expression for a nondescript structure.

Filling in the Grid

THE DNA OF FREEMAN



Freeman Academy, established in 1900.



Freeman Main Street



Local agriculture and artisanal heritage is a celebrated aspect of the community, with festivals (Schmeckfest) and institutions (Heritage Museum) that reinforce the production of creative goods, create unique experiences, and cultivate cultural capital.



Work Samples: City of Freeman

LOCAL ARTISANS

Freeman, South Dakota

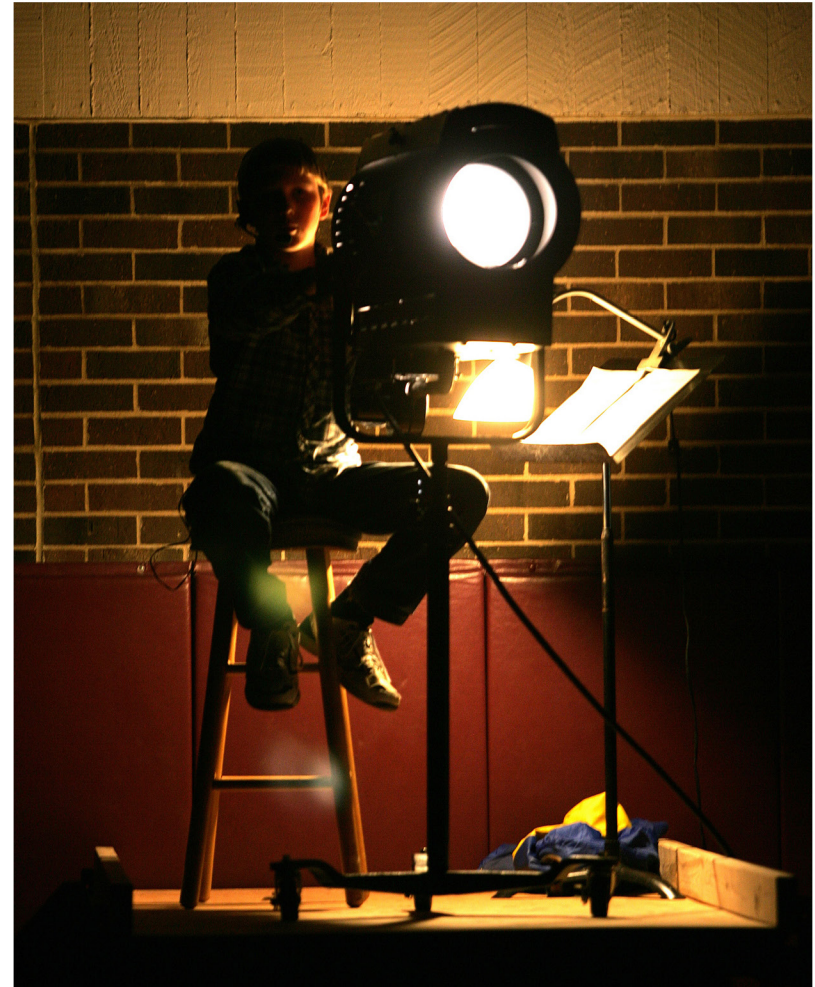


Many artisans learned their craft in the Freeman area, but lack the economic incentives or infrastructure to support themselves in the community.



Work Samples: City of Freeman

FREEMAN THEATRE
Freeman, South Dakota



Theatre is a vital part of Freeman's cultural identity with regular productions by the Ghostlight Players, Freeman Area Community Theatre, Schmeckfest, Freeman's Area Children's Choir, Freeman Academy and Freeman Public Schools.

Work Samples: City of Freeman

ETHNIC FOOD AND SCHMECKFEST

Freeman, South Dakota



During the festival, local specialties celebrating ethnic Russian heritage are sold, but the infrastructure for a year-round program could leverage production throughout the year.



Work Samples: City of Freeman

HERITAGE MUSEUM AND PRAIRIE ARBORETUM

Freeman, South Dakota

Set within the Prairie Arboretum, the Heritage Hall Museum and Archives is dedicated to the preservation of rare artifacts used by the German-Russian settlers of the region with over 20,000 items on display.



Work Samples: City of Freeman

FREEMAN MUSICAL TRADITION

Freeman, South Dakota

The 50+ voice, auditioned Freeman Area Children's Choir represents the top youth of the surrounding area, with performances locally and around the region.



"THE CRUCIFIXION" (top right image) from William Ortman's work "Darkness in the Garden" represents a conglomeration of local talent, professional artists, & the work of many artistic collaborators.



"SHENANDOAH" performed by the Alumni Choir of Freeman Junior College and Academy (featuring alumni from 1949 through 1994).

